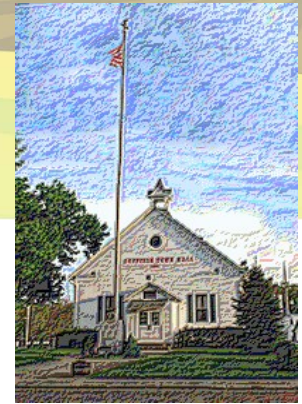




Suffield Township Portage County



Custom homes to be constructed by Sonoma Homes

Country Lots

Well and Septic Approved

Lot & home packages starting around \$380,000

Springfield Local School District

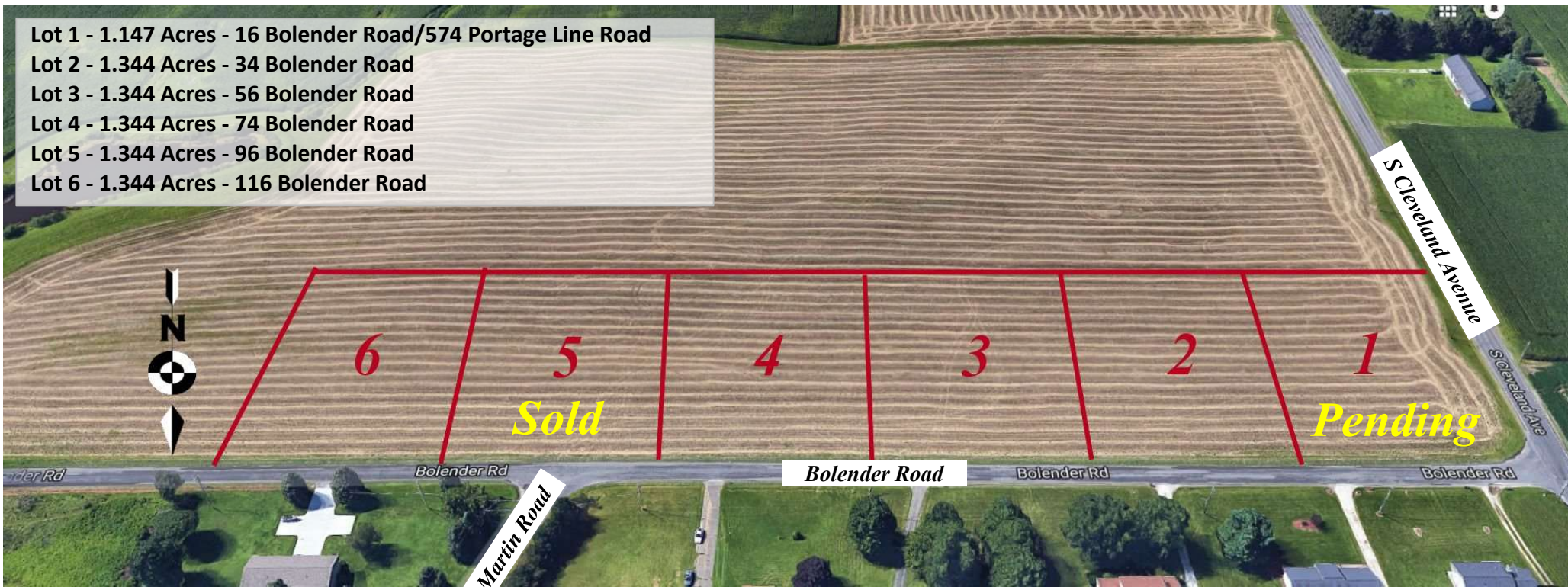
1,800 Sq Ft - Minimum ranch size

2,200 Sq Ft - Minimum 2 story/first floor master size

Concrete driveways and walks to front porch

Stone or brick accents on front elevations

- Lot 1 - 1.147 Acres - 16 Bolender Road/574 Portage Line Road
- Lot 2 - 1.344 Acres - 34 Bolender Road
- Lot 3 - 1.344 Acres - 56 Bolender Road
- Lot 4 - 1.344 Acres - 74 Bolender Road
- Lot 5 - 1.344 Acres - 96 Bolender Road
- Lot 6 - 1.344 Acres - 116 Bolender Road



Phone: 330-877-1060 Email: info@SonomaHomesOhio.com

www.SonomaHomesOhio.com



Sonoma Homes Ohio